

# Knockshanvo Wind Farm Webinar



11<sup>th</sup> October 2023



# Introduction

---

- The need for renewable energy
- About FuturEnergy Ireland
- Project benefits
- Project overview
- Community engagement
- Community benefit fund
- Project timelines
- The planning process
- Q & A

# The Need for Renewable Energy



Climate change

Energy security

Energy independence

Economic security

# The Project Developer

**FuturEnergy** Ireland



- A Coillte and ESB joint venture established in November 2021 to harness Ireland's unique wind and land resources
- An ambition to develop 1GW of renewable energy capacity by 2030
- 20 active renewable energy projects across the country

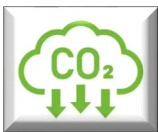
# Project Benefits

Clean, green renewable fuel source,  
naturally abundant in Ireland



Capacity to power approx.  
37,400 – 47,300 houses annually.

Increases Ireland's energy independence  
and security of supply



Offset CO<sub>2</sub> over the lifetime of the project

Community Benefit Fund  
circa €270,000 pa for 15 years. &  
€135,000 pa for remaining lifetime



Short timeframe for carbon payback,  
turbines on the way to fully recyclable

The generation of more than 135,000 MWh annually  
helping Ireland meet its 2030 climate targets



Small land footprint. Much of the land use can  
co-exist with forestry and agriculture

Estimated annual rates to Clare County  
Council circa. €550,000 annually



Securing future energy needs for a growing  
economy and population



# Project Overview

Strategic Infrastructure Development (SID) project

9 Turbine Layout

Removal of one turbine for landscape reasons

Ground-to-blade tip height of 179.5 metres to 185 metres

Hub height of between 102.5 and 110.5 metres

Blade diameter between 149 metres and 163 metres

Turbines 5.7 – 7.2MW

Installation of one permanent meteorological mast up to a height of 100 metres

Access tracks, hard standings, internal cables, borrow pits, construction compounds

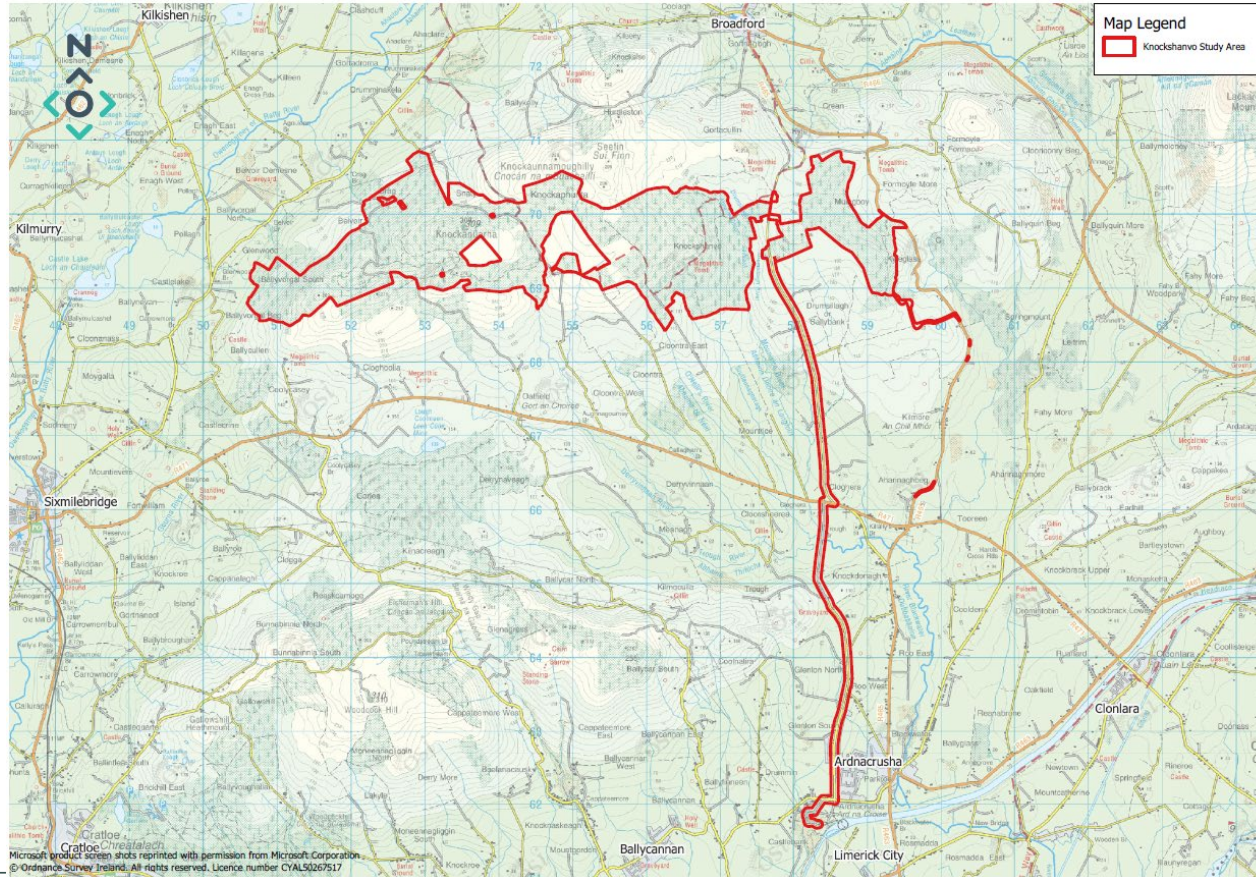
Improvements and temporary modifications to existing public road infrastructure

Construction of one permanent 110 kV substation

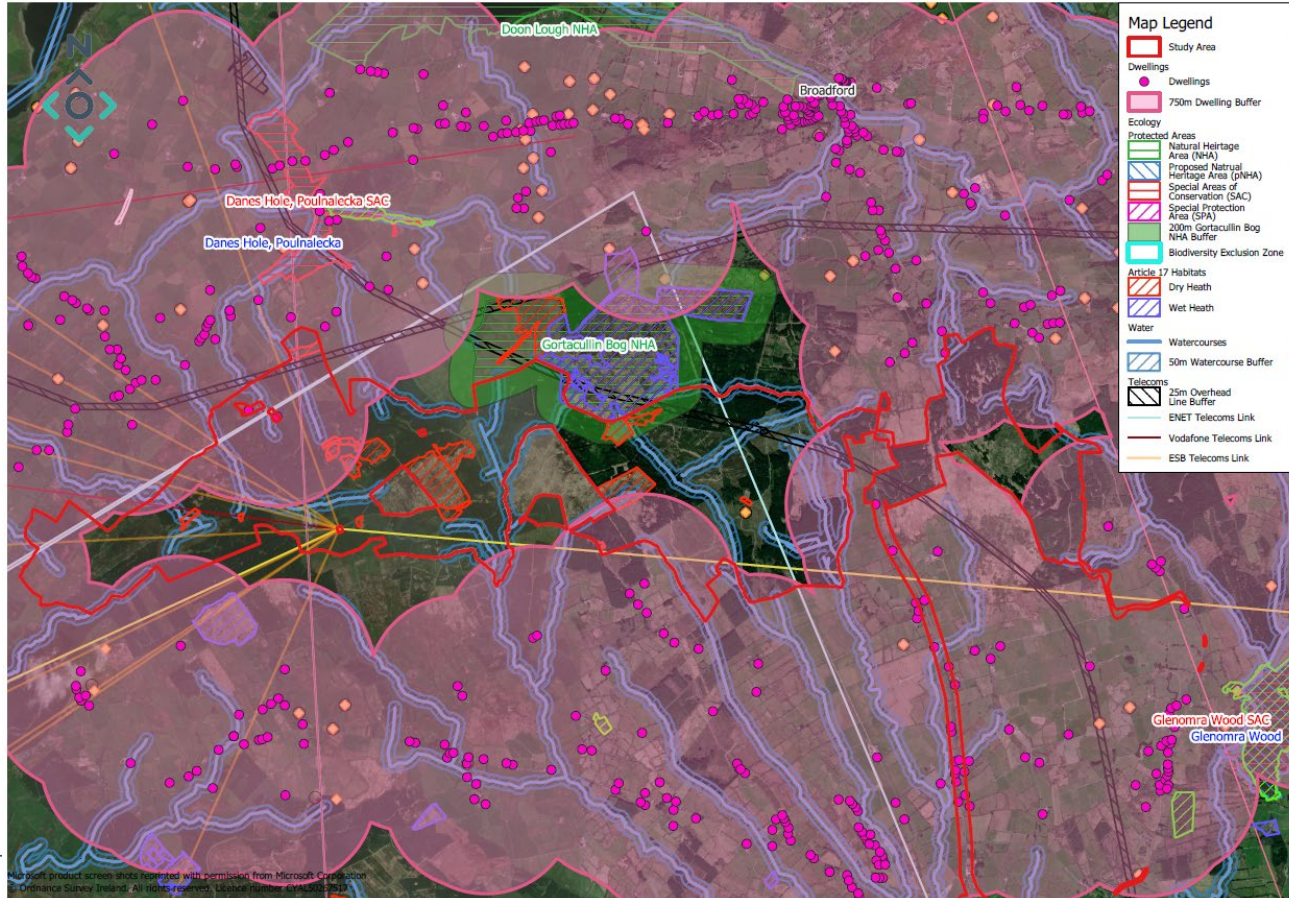
Grid Connection via a 110 kV underground cable connection to the existing Ardnacrusha 110 kV Substation

Community Benefit Fund

# Project Overview: Project Location

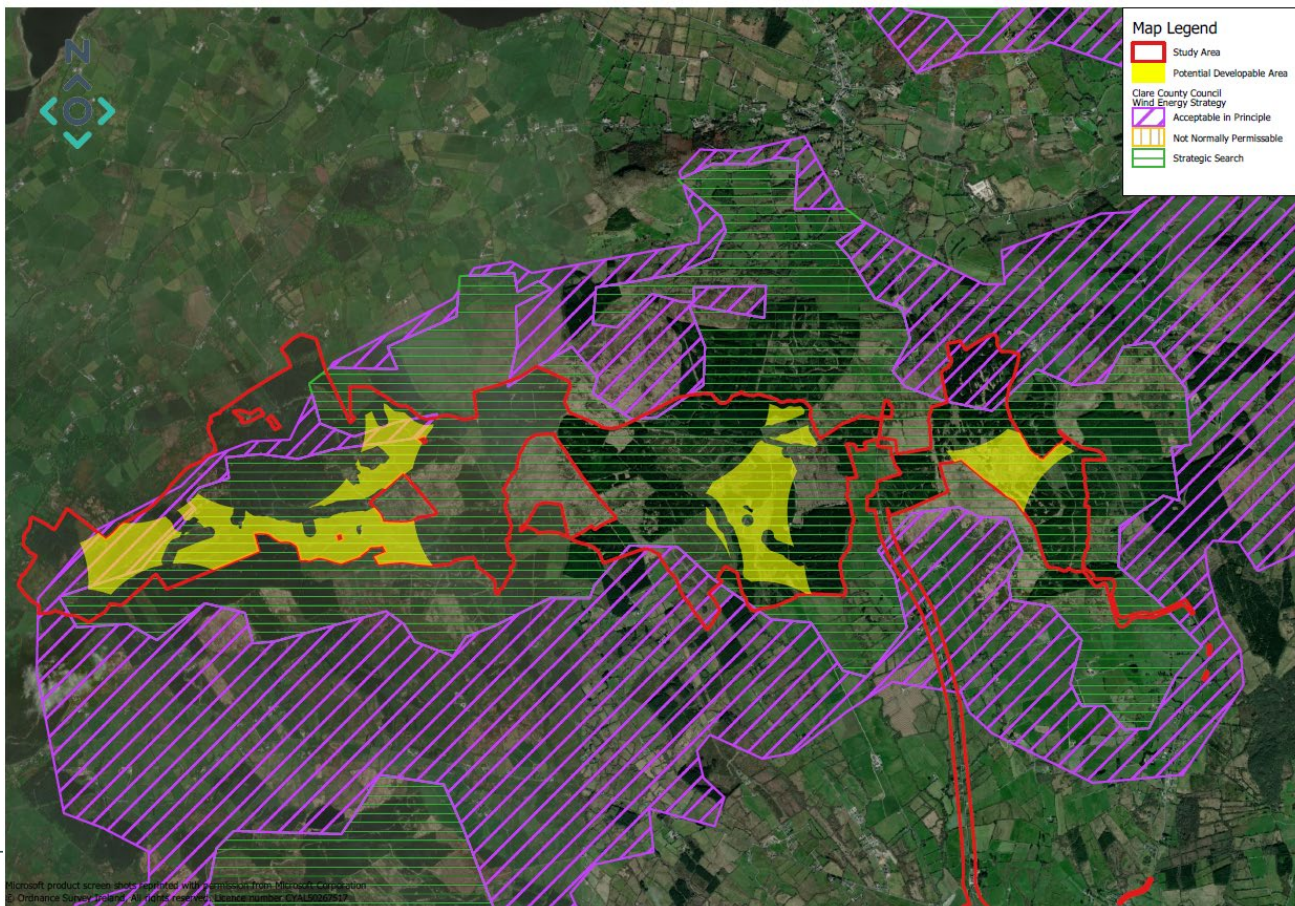


# Project Overview: Constraints



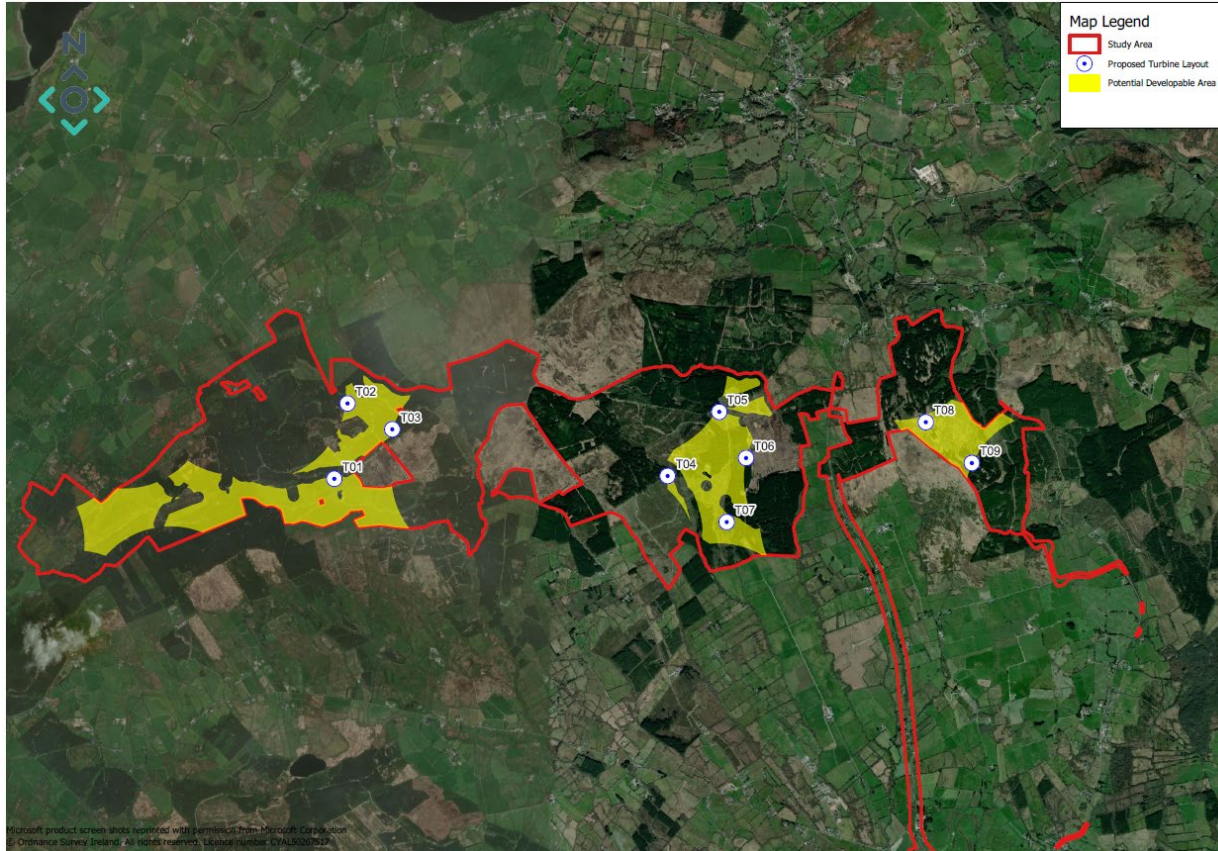
Microsoft product screen shots registered with permission from Microsoft Corporation  
© Ordnance Survey Ireland. All rights reserved. Licence Number: CHA1502751

# Project Overview: Site Suitability and Developable Area

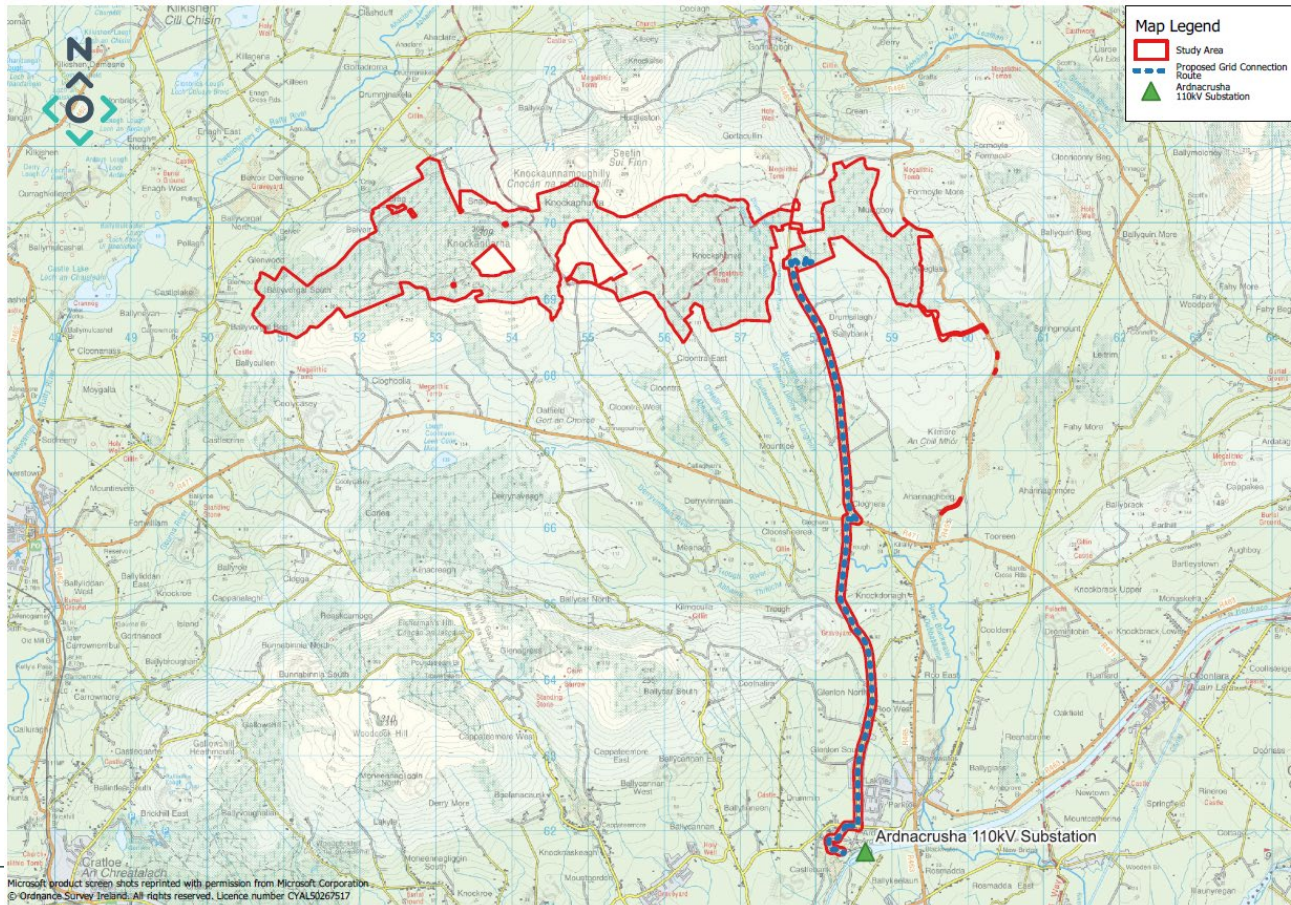


Microsoft product screen shots captured with permission from Microsoft Corporation  
© Ordnance Survey and other rights reserved. Licence number: OPA150009424

# Project Overview: Developable Area and Turbine locations



# Project Overview: Proposed Grid Connection Route



# Community Engagement

- Two dedicated Community Liaison Officers **Christy O'Dea and Kevin Donnellan**
- Role is to deliver project information, meet stakeholders and respond to questions and concerns
- Focus areas:
  - 1. Near neighbours living within 2km of the project
  - 2. Local community groups
  - 3. Wider public including political representatives
- Wider public engagement via project website, press releases, local media advertorials and advertised project webinar (copies available).
- Christy and Kevin will continue to be available throughout the project

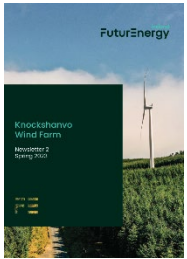


# Community Engagement Timeline

**Nov 2022**  
Introduction  
Newsletter 1  
  
- Press release  
- Website  
- Fact File



**April 2023**  
Newsletter 2  
- Press release



**Spring 2023**  
Sponsored N/S  
Education  
Programme



**July 2023**  
Newsletter 3  
- Press release



**October 2023**  
Public  
Webinar



**To come....**

**Autumn 2023**  
Brochure  
& Letter



**Autumn 2023**  
Virtual Tour  
launch



**Winter 2023**  
Community  
Clinics



**Throughout  
the process**

CLOs available  
to answer  
queries. Website  
kept updated

**CLO contact details:**  
**Kevin Donnellan 087 431 5976**  
**Christy O'Dea 087 395 8867**

# Community Benefit Fund



Renewable Electricity Support Scheme (RESS) projects are required to establish a Community Benefit Fund for the local community



The fund must remain in place for the duration of RESS which is 15 years



Megawatt Hours generated by the turbines during the year x €2 per MWh  
= Community Benefit Fund **€270,000 pa**



FEI will add a further €1/MWh for remaining lifetime of the windfarm  
= Community Benefit Fund **€135,000 pa**



**Estimated total: €6 million over project lifetime**

# Community Benefit Fund

The Government has provided guidelines on how Community Benefit Funds are managed and distributed

Good Practice Principles Handbook for Community Benefit Funds  
([www.gov.ie/publications](http://www.gov.ie/publications))



- 1) Near neighbour payments, min € 1,000/annum up to 1 km
- 2) Max 40% to community enterprises based on the UN Sustainable Development Goals  
(e.g. education, clean energy, sustainable communities and climate action)
- 3) Max 10% administration costs
- 4) Balance of fund split between community clubs, societies, local entities & neighbours in 1-2km band.

The Community will decide where the fund is used. Once construction begins, a local Fund Committee will be established with the assistance of an administrator

# Knockshanvo Wind Farm: Timelines

Project Phases	Est. Timeline	
Planning Application	<b>2023</b>	
Planning Decision	<b>2024/25</b>	(1 - 1.5 years)
Pre-Construction	<b>2026/27</b>	(1.5 - 2 years)
Construction	<b>2028/29</b>	(1.5 - 2 years)
Operational	<b>2029/30</b>	(30 - 35 years)

# Next Steps: Planning

## Planning submission to An Bord Pleanála Strategic Infrastructure Development (SID)

It is anticipated that an application for the wind farm and a separate application for the grid connection will be submitted toward the end of **2023**.

The intention to submit will be **advertised in local, national newspapers**.



**Notices** will be erected at the site.

When all documentation has been received and validated by An Bord Pleanála, the full application will be uploaded to view at:

- [www.knockshanvoplanning.ie](http://www.knockshanvoplanning.ie)
  - [www.pleanala.ie](http://www.pleanala.ie)
- at the offices of An Bord Pleanála and Clare County Council.

The time available to make a submission is 6 weeks.

Thank you